

Features

- 71-76GHz and 81-86GHz High Power Amplifiers
- Saturated powers up to >22W
- High linearity supports 256QAM modulation
- Wide 5GHz bandwidth
- >20dB gain
- Suitable for military, commercial & Satcom applications

Description

Filtronic's range of E-Band SSPA amplifiers provide market leading linear mmW power. Available in single to N-way configurations, the power amplifiers deliver unparalleled performance for long range E-Band communications.

Each amplifier module contains 32 E-Band GaAs MMICs, performance matched and power combined in waveguide to deliver maximum power. An integrated temperature sensor provides users with accurate amplifier temperature data, and optional control circuitry facilitates functions including mute control and alarms.

The Cerus 32 is highly configurable, offering an improved user interface and seamless integration. The amplifiers can be easily customised to enhance integration and are available as standalone SSPAs with WR12 input on top and output on the bottom, or with both input and output on the bottom. Moreover, it can be supplied with a powerful integrated Morpheus transceiver and high-power diplexer.

- Proven system performance
 - Demonstrated power combining in systems up to E-Band (71-76GHz & 81-86GHz)
- Field proven technology
 - >80,000 Filtronic millimetre wave transceivers deployed worldwide.

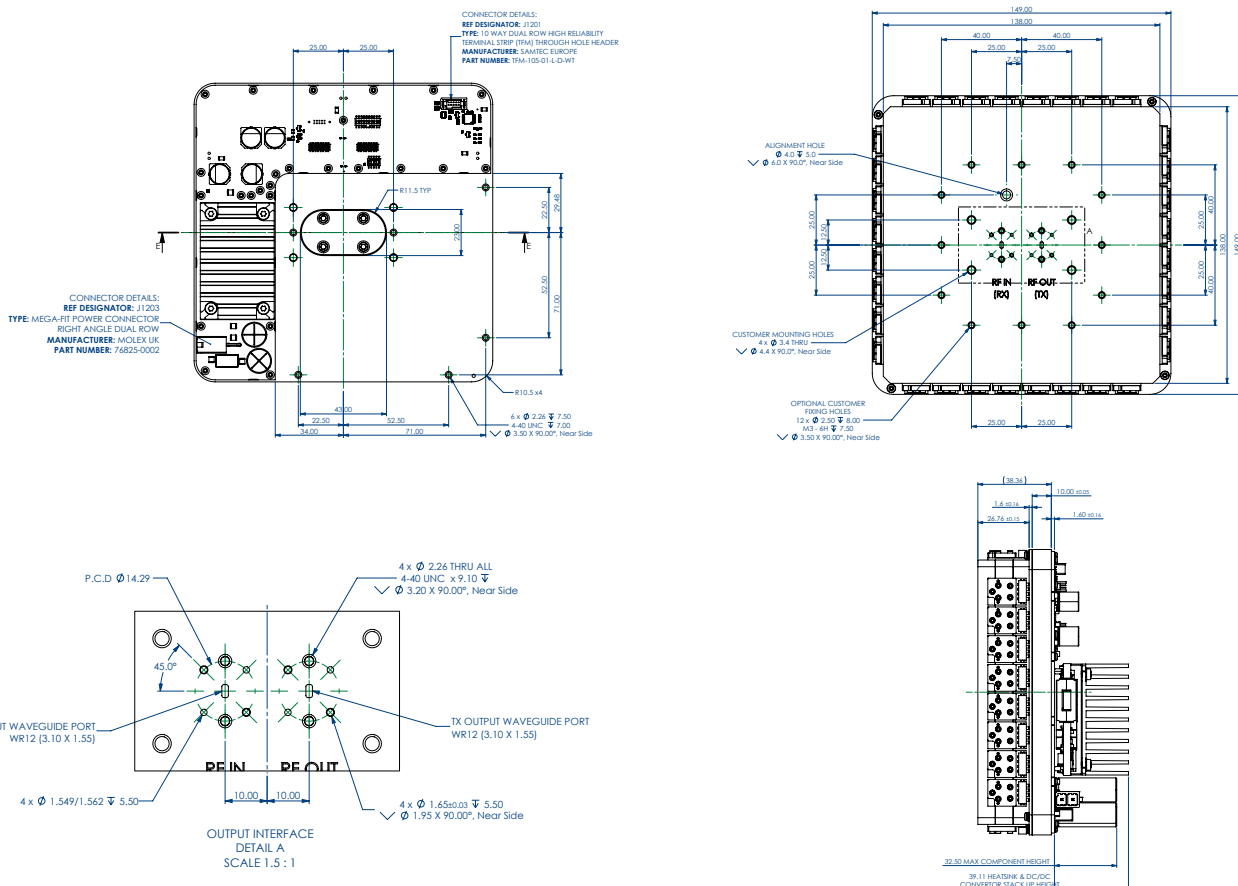
AA029 Outline Specification

Parameter	Min	Typ.	Max	Units
Frequency	71		76	GHz
Bandwidth	5			GHz
Small Signal Gain		22		dB
Psat [dBm]		43.5		dBm
Psat [W]		22		W
OIP3 @ 37dBm		48		dBm
Supply Voltage	32	48	72	V
Supply Current @ 48V		7.9		A
Size		149 × 149 × 80		mm
Weight		2100		grams

AA030 Outline Specification

Parameter	Min	Typ.	Max	Units
Frequency	81		86	GHz
Bandwidth	5			GHz
Small Signal Gain		22		dB
Psat [dBm]		43		dBm
Psat [W]		20		W
OIP3 @ 37dBm		47		dBm
Supply Voltage	32	48	72	V
Supply Current @ 48V		7.9		A
Size		149 × 149 × 80		mm
Weight		2100		grams

AA029/AA030 Interface Specification



Connector J1203 pin-out

Pin NO.	Name	Type	Description
1	48V	Power input	48V input supply
2	GND (Isolated)	Ground	Ground

Connector J1201 pin-out

Control interface.

Pin NO.	Name	Type	Description
1	Amplifier Enable	Input	Set high for enable (3V3)
2	Do not connect		Do not connect
3	Amplifier Alarm	Output	Alarm when certain parameters are out of specification.
4	Do not connect		Do not connect
5	GND	GND	Ground
6	Do not connect		Do not connect
7	3V3	Power Input	3V3 DC input
8	Do not connect		Do not connect
9	Do not connect		Do not connect
10	Do not connect		Do not connect

Contact Us

Filtronic, NETPark Plexus 1, Thomas Wright Way, Sedgefield, County Durham. TS21 3FD. UK

Tel: +44 1740 618 800 Email: sales@filtronic.com

All specifications are subject to change without notice. Visit www.filtronic.com for the most current datasheets. © 2024 Filtronic plc. All rights reserved.